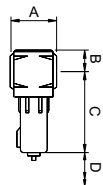


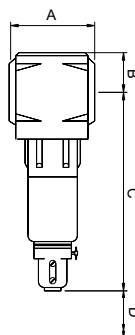
## WEIGHTS & DIMENSIONS

MODEL	PIPE SIZE	DIMENSION (MM)				WEIGHT kgs.
		A	B	C	D	
WX35	10 mm (G 3/8)	77	35	134	75	0.7
WX85	15 mm (G 1/2)	88	41	195	135	1.2
WX127	20 mm (G 3/4)	90	41	195	135	1.5
WX159	25 mm (G 1)	90	30	195	135	3.0
WX318	40 mm (G 1 1/2)	119	61	352	275	7.0
WX742	50 mm (G 2)	161	70	820	630	10.5
WX 1695	80 mm (G 3)	200	90	842	630	18.5

Models  
WX 35 to WX 318



Models  
WX 742 / WX 1695



KIT NAME	CONSISTS OF	ORDERING NUMBERS	
Autodrain Kit	Auto Drain Complete	WX-35 to WX-318	AD-D
		WX-742 to WX-1695	AD-E
Maintenance Kit	Comprising of Bowl Replacement 'O'Ring Sight Glass Kit and Autodrain Kit	WX 35 WX 85/127/159 WX 318 WX 742 WX 1695	WAK1 WAK2 WAK3 WAK4 WAK5
Sight Glass Kit	Comprising of Sight Glass with 2 securing Screws Washer and 'O'Ring	All	SFLB-09A

**Shah Pneumatics** has a continuous policy of product development and although the Company reserves the right to change specifications, it attempts to keep customers informed of any alterations. This publication is for general information only and customers are requested to contact our Industrial Division Sales Department for detailed specifications and advice on a product's suitability for specific applications. All products are sold subject to the Company's standard conditions of sale.

**ProAir** is a trademark of **Shah Pneumatics**.

**Compressed Air Treatment Products**

**Shah Pneumatics**

28-30, Navketan ind. estate,  
Mahakali Caves Road,  
Andheri - (E), Mumbai - 400093, INDIA.  
Ph:- +91-22-6695 1090, Fax:- +91-22-26875317  
E-mail:- shahpneu@bom3.vsnl.net.in  
Website : www.shah-pneumatics.com



# ProAir



## TYPE-WX WATER SEPARATORS

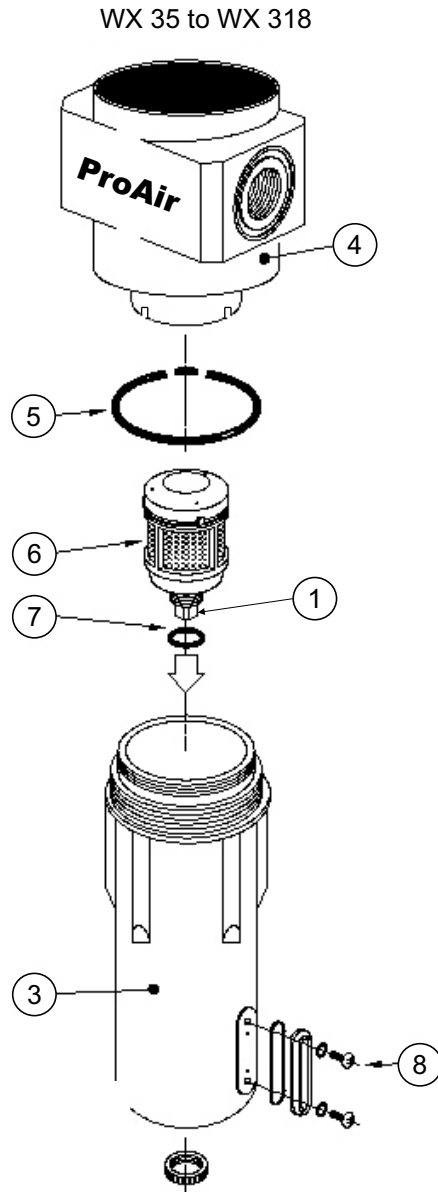
### INSTALLATION OPERATION & MAINTENANCE INSTRUCTIONS

Models  
WX35-WX1695

Size  
10 mm - 80 mm  
(G3/8" - G3")  
FEMALE PIPE CONNECTIONS

**INSTALLATION**

1. Purge all pipework before installing the water separator to remove any contamination.
2. Every water separator is supplied complete with automatic drain, as standard supply.
3. Connection to the air line is made by inline female pipe connections BSPP for use with parallel and taper fittings.
4. The correct direction of flow is indicated by an arrow on the water separator head insert. (As well as maximum working pressure temperature and housing code).
5. Water separator should be mounted vertically, allowing clearance to remove the bowl for periodic maintenance.
6. Always install the water separators at the coolest point of the system for highest efficiency.
7. If possible try to match water separator port size with that of the pipework eases installation as well as reducing the pressure drop to a minimum.
8. The automatic drain has a 3 mm (G1/8 Female) pipe connection to allow liquids to be drained. Pipes should be kept to a minimum diameter of 6mm to avoid any restriction which may affect the operation of the drain mechanism.
9. A sight glass facility to observe the correct functioning of the automatic drain is fitted. A malfunctioning drain is indicated by a high level of liquid in the sight glass.

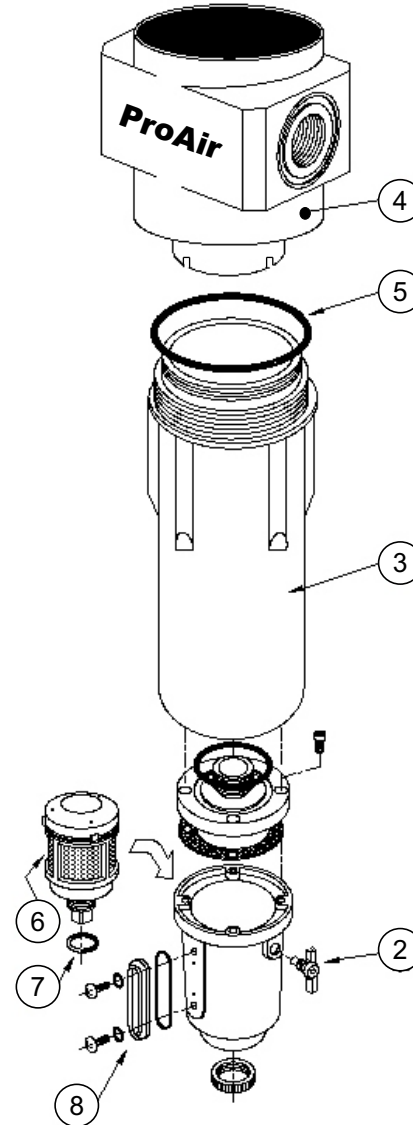


Maximum Supply Pressure 16 Kg/cm<sup>2</sup>g

**MAINTENANCE**

WX-742 / WX-1695

The water separator will operate indefinitely under normal working conditions. However at some time it may be necessary to replace seals should the housing leak.



1. Isolate housing from air supply first.
2. Fully depressurise using vent valve (1) at bottom of autodrain or (2) in drain bowl as appropriate.
3. Unscrew bowl (3) and remove. If pressure has not been completely released from the housing, air will escape from the warning hole (4) giving an audible alarm. Screw back bowl and repeat instruction 2 before attempting again. Should resistance to unscrewing be experienced, provision is made for a "C" spanner to fit onto the ribs of the bowl.
4. Check condition of bowl seal (5) and replace if necessary. Clean screw threads.
5. The autodrain assembly (6) is not serviceable and must be replaced if faulty.
6. Check the autodrain seal (7) and replace if it is worn. NOTE : WHEN REPLACING AUTODRAIN, TAKE THE OPPORTUNITY TO GENERALLY CLEAN THE INSIDE OF THE BOWL AND THE SCREW THREADS.
7. Replace vent valve (2) if faulty or leaking.
8. Refit bowl (3) with 'O' ring seal (5).
9. A sight glass (8) monitors the function of the automatic drain and in adverse conditions can become contaminated. Dismantle as per detail '8' and clean. A replacement kit is available.
10. Repressurise and check for leaks. If leaks do occur they will most probably be from the bowl 'O' ring (5). Depressurise housing and remove 'O' ring as stated above and inspect and clean. Ensure that mating surfaces are clean and then refit 'O' ring and bowl, then repressurise.